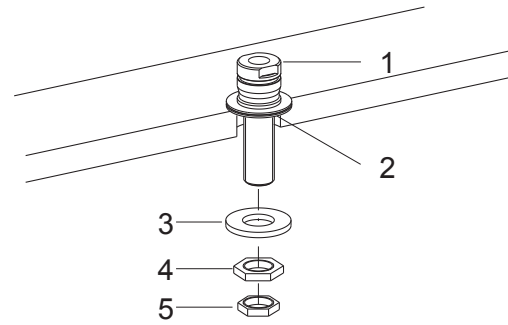


77368T Deck-mount Bath Spout With Arc Design
<div><div>BEFORE YOU BEGIN</div><div><p>All information is based on the latest product information available at the time of publication. Kohler Co. reserves the right to make changes in product characteristics, packaging, or availability at any time without notice.</p><p>Please leave these instructions for the consumer. They contain important information.</p><p><b>NOTES:</b></p><ol style="list-style-type: none"><li>1. Flush the water supply pipes thoroughly to remove debris.</li><li>2. An in line water filter must be used with this product.</li><li>3. Inspect the supply tubing for damage and leakage. Replace and maintain as necessary.</li><li>4. Observe local plumbing codes.</li><li>5. If possible, install this faucet before installing the sink.</li><li>6. Shut off the water supplies to the fitting.</li><li>7. The bath spout must be used with handle 98068T-4DR.</li><li>8. All installations should comply with the relevant requirements of AS/NZS 3500.</li></ol></div></div>
<div><div>ROUGH-IN DIMENSIONS</div><div><p>The technical drawing illustrates the rough-in dimensions for the 77368T Deck-mount Bath Spout. It includes two views: a front view and a side view. The front view shows the spout's base with a central mounting hole of diameter Ø69 and a wider mounting area of Ø23~Ø38. The distance between the centers of the two side handles is 203. The maximum height of the spout body is 45. The side view shows the spout's arc, with a height of 133, a horizontal reach of 229, and a spout tip height of 74 at an 11° angle. The model number 77368T is printed in the bottom right corner of the drawing area.</p></div></div>

## INSTALLATION

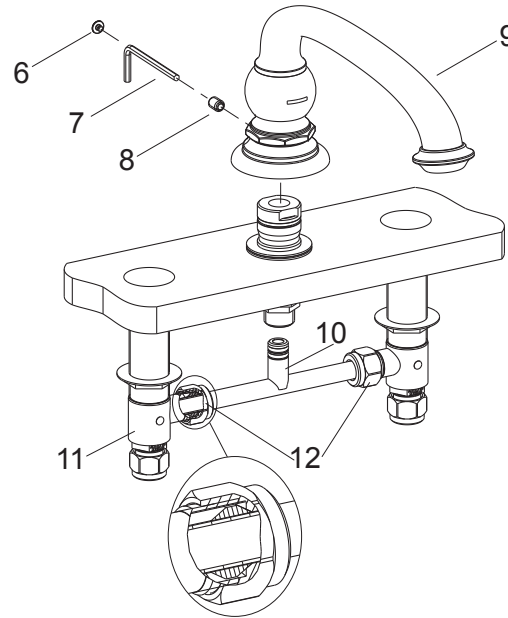


### How to Install the Spout Shank

Fit the shank(1) with washer(2) into the center hole of tub.

Install the washer(3) and nut(4, 5) onto the shank, make sure the flat of the shank forward, tighten the nuts.

①



### How to Install the Spout

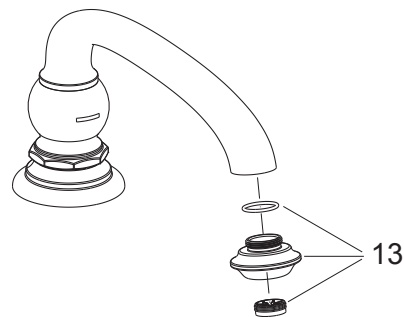
Assemble the tee-piece(10) to the side bodies(11, not provided). Insert the side bodies into the mounting hole from the underside of the deck.  
**NOTE:** The side body with red mark should be installed on the left, and locate the tee-piece onto the spout shank.

If the tee-piece cannot be inserted into the shank, you can loosen the nuts(12), and adjust the tee-piece position. Then tighten the nuts with a wrench.

Install the spout(9) onto the shank until it contact the deck. Position the spout, tighten the screw(8) in the spout back by hex wrench(7). Insert the plug(6) into the rear hole.

②

## INSTALLATION CHECKOUT



Ensure that all coupling nuts are tight. Ensure that the lever handles are in the off position.

Turn on the main water supply and drain, and check for leaks. Repair as needed.

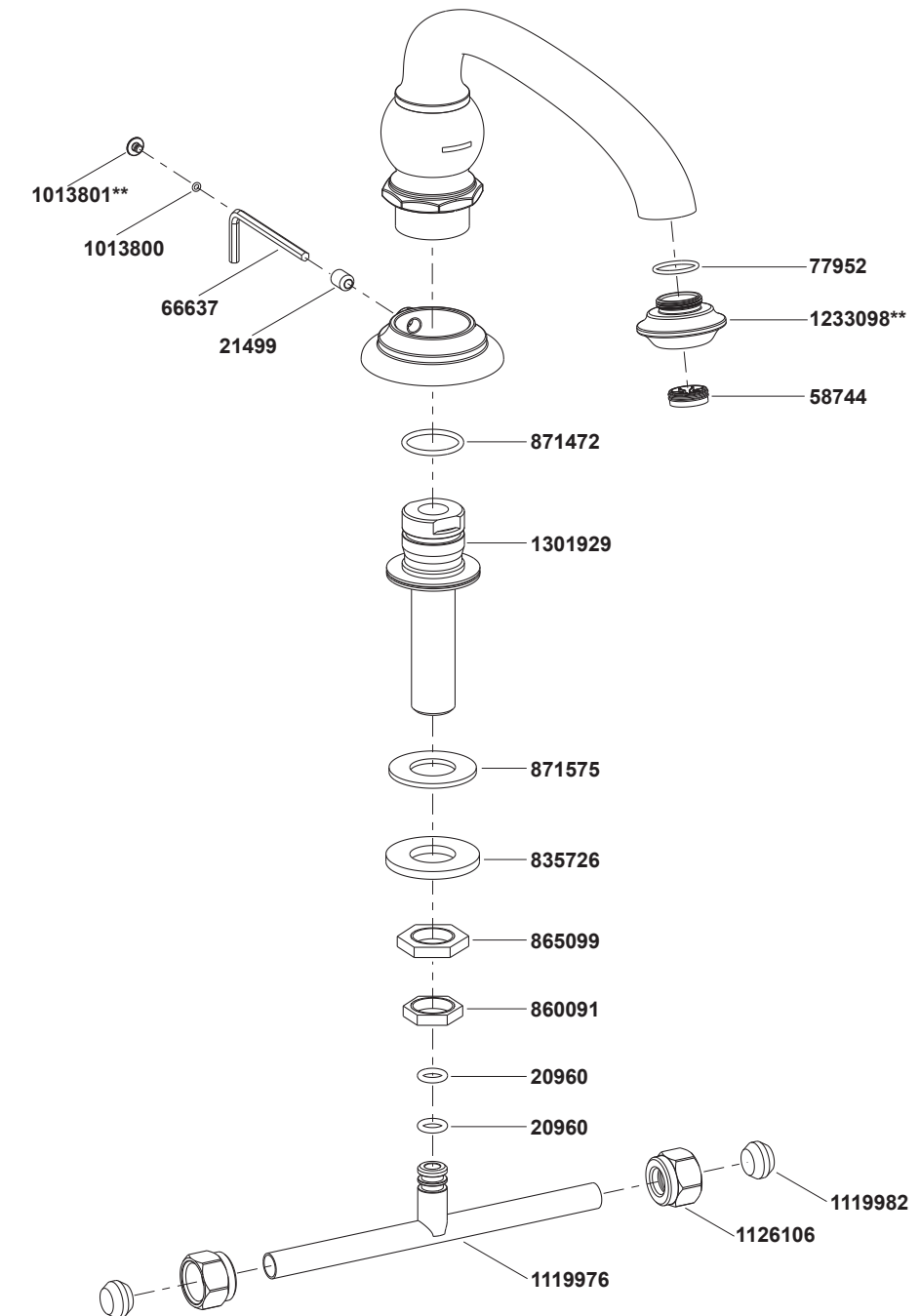
Remove the aerator kit(13) by hand. Run hot and cold water through spout for about one minute to remove any debris. Check for leaks. Repair as needed. Remove any debris from the aerator. Shut off the faucet. Reinstall the aerator.

## CLEANING INSTRUCTIONS

All Finishes: Clean the finish with mild soap and warm water. Wipe entire surface completely dry with clean soft cloth. Many cleaners may contain chemicals, such as ammonia, chlorine, toilet cleaner etc, which could adversely affect the finish and are not recommended for cleaning.

Do not use abrasive cleaners or solvents on Kohler faucets and fittings.

## 77368T Deck-mount Bath Spout With Arc Design



\*\*Color code must be specified when ordering.