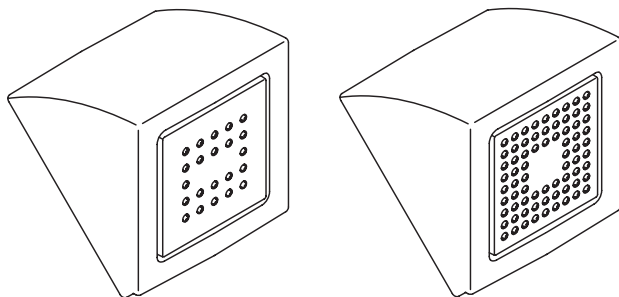


# KOHLER®



## Watertile Showerhead

# Installation and User Guide

### MODEL NUMBERS

8022A, 8023A

**Important!** Please quote the above model number(s) when ordering spares

### IMPORTANT

**INSTALLER:** THIS MANUAL IS THE PROPERTY OF THE CUSTOMER AND MUST BE RETAINED WITH THE PRODUCT FOR MAINTENANCE AND OPERATIONAL PURPOSES.

# BEFORE YOU BEGIN

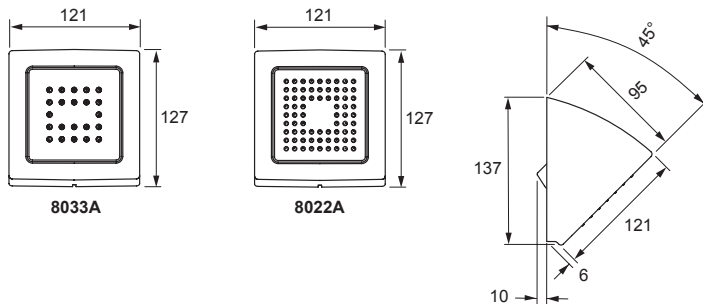
All information is based on the latest product information available at the time of publication. Kohler Co. reserves the right to make changes in product characteristics, packaging, or availability at any time without notice.

Please leave these instructions for the consumer.

## NOTES:

1. Flush the water supply pipes thoroughly to remove any debris.
2. An in line water filter must be used with this product.
3. Inspect the supply pipes for damage. Replace as necessary.
4. Observe local plumbing codes.
5. The recommended working pressure for the shower head is 150KPa to 500KPa. If the pressure exceeds 500KPa a pressure reducer is required.
6. Maximum water and environmental temperature for the shower head is 60C. Note: If a heater is present, make sure to keep it away from the shower head as otherwise the environmental temperature may exceed 60C.
7. All installations should comply with the relevant requirements of AS/NZS 3500 and AS/NZS 6400.

## DIMENSIONS



## SPECIFICATION

**Pressures** For multiple outlets an operating pressure of 3.0 bar or greater is recommended to ensure optimum performance.

**Plumbing Connections** (Hot) and Cold (C) inlets must be connected to the correct inlet supplies.

**Building in Depth** Minimum building in depth is 79 mm. It is recommended that a minimum stud wall cavity of 100 mm is provided to ease installation.

# INSTALLATION

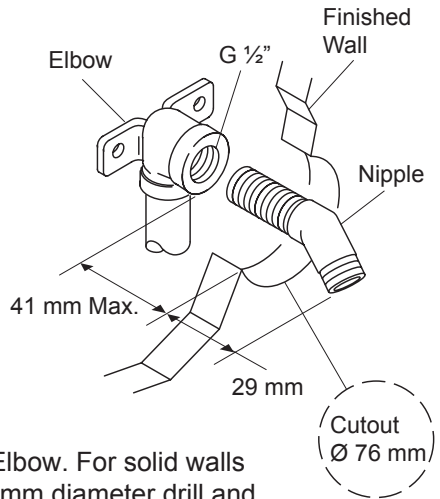
## Before you Begin

1. Turn off the water supply.
2. Make sure that the Watertile showerhead is installed by a competent installer.
3. Before installation carefully inspect the new fixture for any signs of damage.
4. Kohler Co. reserves the right to make revisions in the design of products without notice.

## Install the Pipe and Elbow

1. Install the water supply pipes.
2. Install the wall mount elbow to the end of the water supply pipe at the shower head installation location.

**Note!** The wall mount elbow, wall plugs and fixing screws are not supplied with the product. The installer should use an appropriate wall fixing arrangement to suit the wall type or surface.

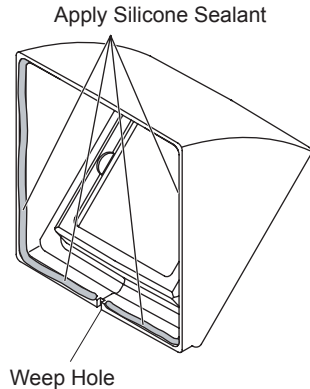


3. Mark the position of the Wall Mount Elbow. For solid walls drill the wall Mount Elbow holes with a 7mm diameter drill and insert the wall plugs (Supplied). For other types of wall structure alternative fixing may be required (Not supplied)
4. Fix the Wall Mount Elbow to a solid wall or to a frame mounting using the fixing Screws supplied.
5. Finish the wall leaving a Ø76mm cutout.
6. Temporarily install the Elbow to the nipple. Do not use any sealant.
7. Make sure that the nipple extends 29mm from the finished wall. If necessary cut the long leg of the nipple to the required length
8. Apply thread sealant to the long leg of the Nipple and install it into the Elbow
9. Run water through the system to flush out any dirt or debris.

## Install the Watertile Showerhead

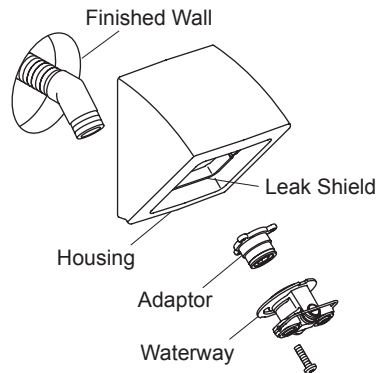
### Prepare the Housing:

1. Position the housing so that the back of the leak shield is facing you.
2. Apply a bead of silicone sealant in the groove around the outside of the housing. Do not apply silicone sealant in or near the weep hole.
3. Allow the silicone sealant to cure.



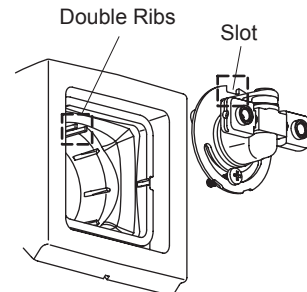
### Install the Components:

1. Position the housing with the sealant side towards the finished wall and the narrow end of the housing facing down.
2. Position the so that the nipple is through the centre and press firmly against the finished wall.
3. Thread the adaptor onto the nipple.



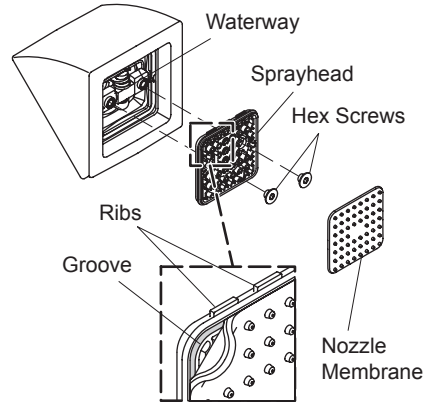
### Install the Waterway:

1. Press the waterway into place over the adaptor.
2. Secure the waterway to the adaptor with the screw provided. The waterway will be secure once the housing is completely seated against the wall and does not turn or move.



## Finish the Installation

1. With the ribs of the sprayhead facing up, attach the sprayhead to the waterway.
2. Using a 3/16" hexagonal key, secure the sprayhead to the waterway with the 2 securing screws (supplied). Do not overtighten.
3. Check the sprayhead for upward and downward movement and that it sits squarely within the housing.

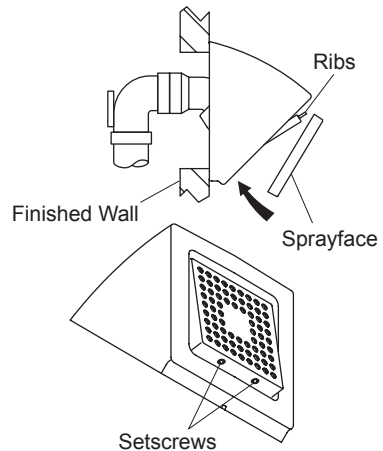


4. Place the nozzle membrane over the sprayhead

**Note!** For optimum performance make sure that the membrane is applied evenly.

5. Tilt the sprayhead downward so that the ribs on top of the sprayhead are exposed.
6. Insert the grooves of the sprayface over the ribs of the sprayhead.
7. Press the sprayface down to cover the sprayhead, as illustrated.

## Attach the Sprayhead



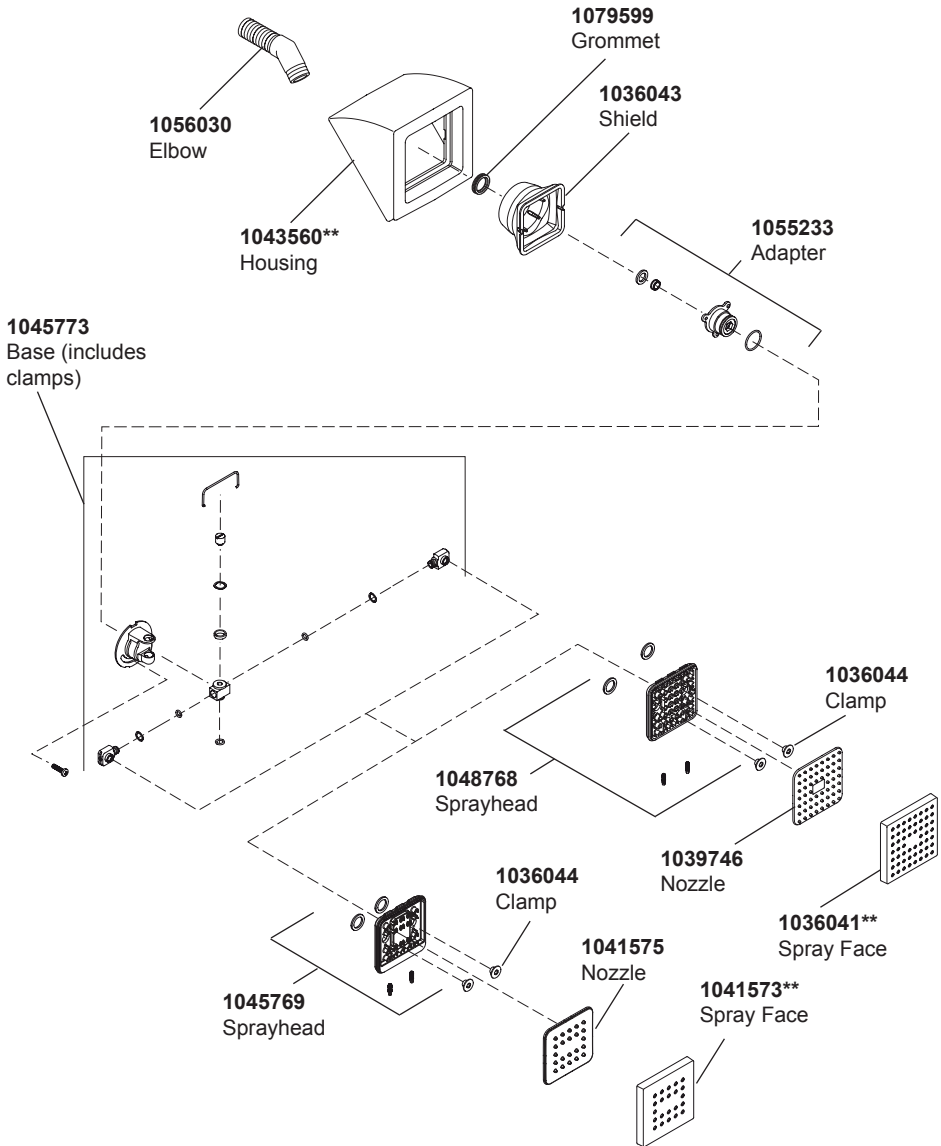
8. Tilt the sprayhead upwards to expose the setscrew holes on the bottom of the sprayhead.

**Important!** The setscrews must be flush with the edge of the sprayface frame. If the setscrews protrude outside of the sprayface frame product damage will occur.

## Attach the Sprayface

9. Using a 7/64" hexagonal key, turn the setscrews anti-clockwise until they are flush with the edge of the sprayface frame.

# SPARE PARTS



\*\* Finish/colour code must be specified when ordering.

# CARE AND CLEANING

Like anything of lasting quality, Kohler tapware and fittings require a certain amount of periodic care to preserve their lustrous finish. Clean your new Kohler tapware and fittings with a mild soap, rinse thoroughly with warm water and dry with a clean, soft cloth. The ideal cleaning technique is to always blot dry any water from metal surfaces.

Allowing water to evaporate on metal will form water deposits. It is important to use a dabbing action to dry metal, not an abrasive or rubbing action.

Never use cleaners containing abrasive cleansers, ammonia, bleach, acids, or chemicals that can damage the finish. By taking the time to dry your tapware often, soap and water deposits can be prevented.

Failure to comply with these cleaning instructions may void Kohler's warranty obligations.