

13968A-0 Kohler QC Seat with metal hinge
7381A-0 Opiaz QC Seat with metal hinge
2550A-0 Presquile QC Seat with metal hinge
2551A-0 Freelance QC Seat with metal hinge
2552A-0 Ove QC Seat with metal hinge

E70004-FT Escale QC Seat with metal hinge
E6046A-00 Reach QC seat with metal hinge
E6402A-00 Reve QC seat with metal hinge
6472A-00 Viragio wall hung

BEFORE YOU BEGIN

Thank you for choosing the Bold Look of Kohler. Kohler craftsmanship offers you a rare combination of proven performance and graceful sophistication that will satisfy you for years to come. The quality and dependability of your Kohler toilet seat will surpass your highest expectations. We're very proud of our products here at Kohler and we know you will be too.

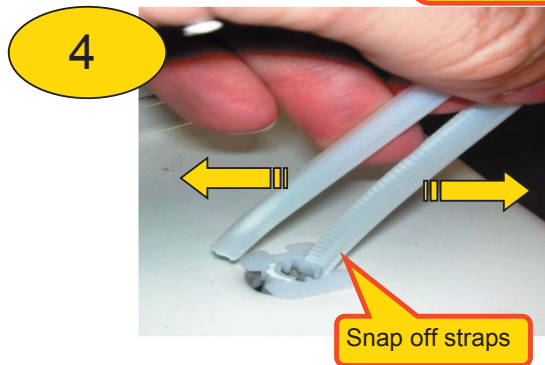
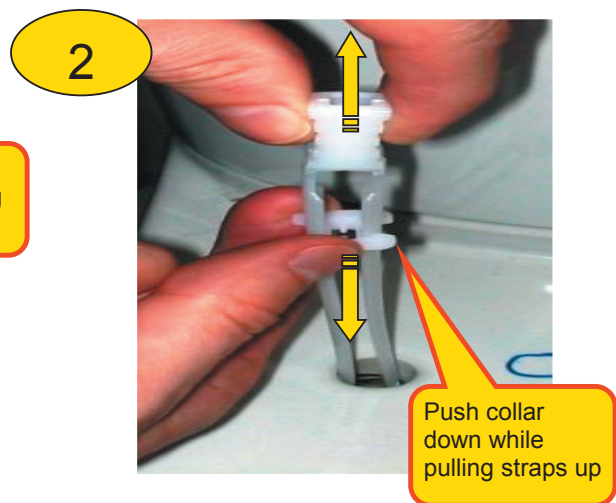
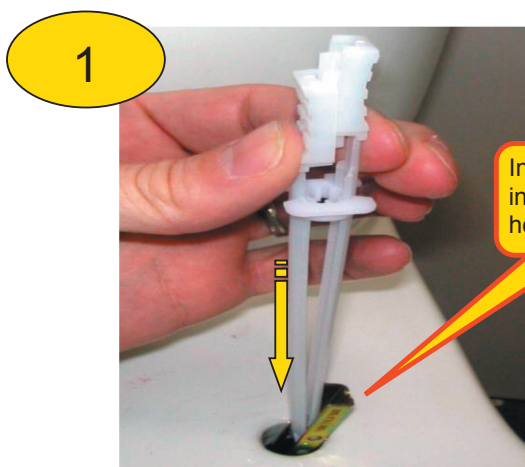
Please take a few minutes to study this manual. Pay special attention to the Care and Cleaning instructions. All information in this manual is based upon the latest product information available at the time of publication. At Kohler we constantly strive to improve the quality of our products. We reserve the right to make changes in product characteristics, packaging or availability at any time without notice.

Care and Cleaning of Seats: Use warm soapy water only on toilet seats. Do not use abrasive cleaners or chemicals. This can damage the surface of the seat.

SEAT INSTALLATION

Most Kohler toilet seats come supplied with plastic toggles which allow the quickest and most reliable installation. To install seats with toggles, follow seat installation method A. Some toilet pans will not allow the use of toggles as the fixing holes do not go completely through the toilet pan. For these toilet pans follow seat installation method B.

SEAT TO PAN INSTALLATION METHOD A - (toggles)



5



6



Bolt hinge plate to plastic toggle collar

SEAT TO PAN INSTALLATION METHOD B - (no toggles)

1



2



Assemble plastic and brass fittings to end of bolt.

3



Insert into seat fixing hole.

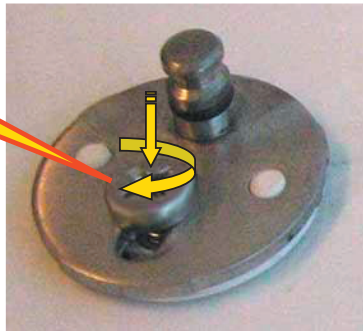
4



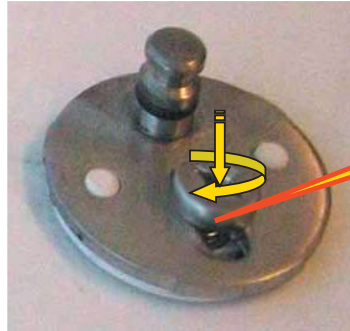
Continue with seat installation.

SEAT INSTALLATION FOR METHODS A AND B

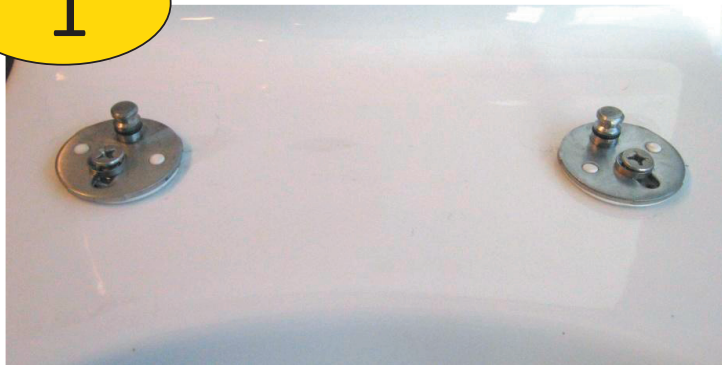
Do not fully tighten



Do not fully tighten



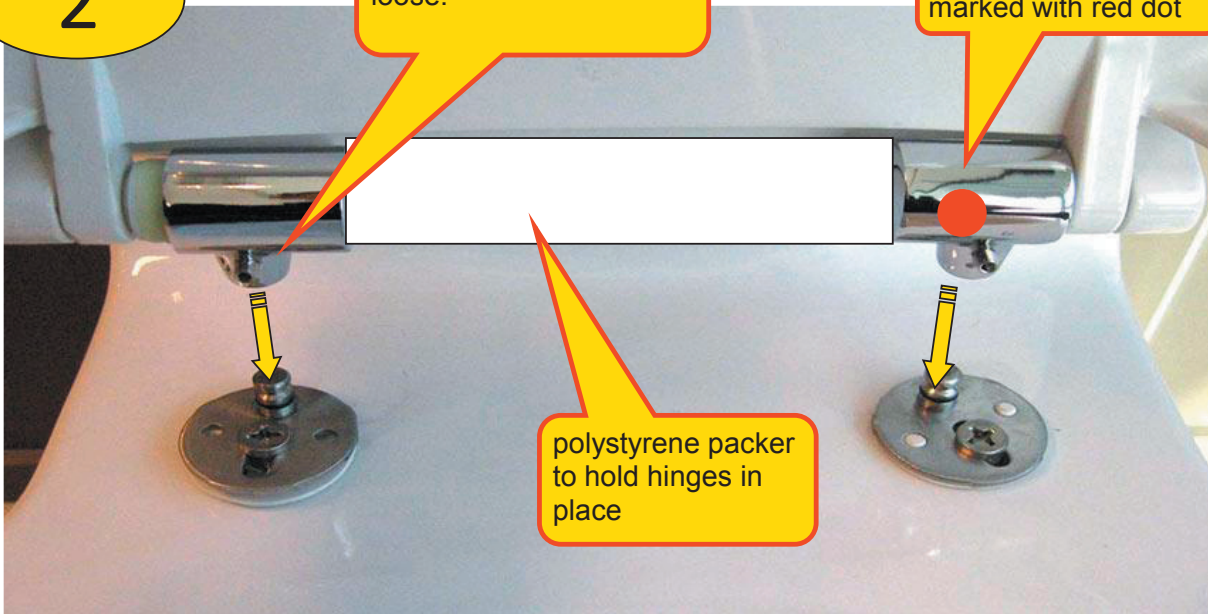
1

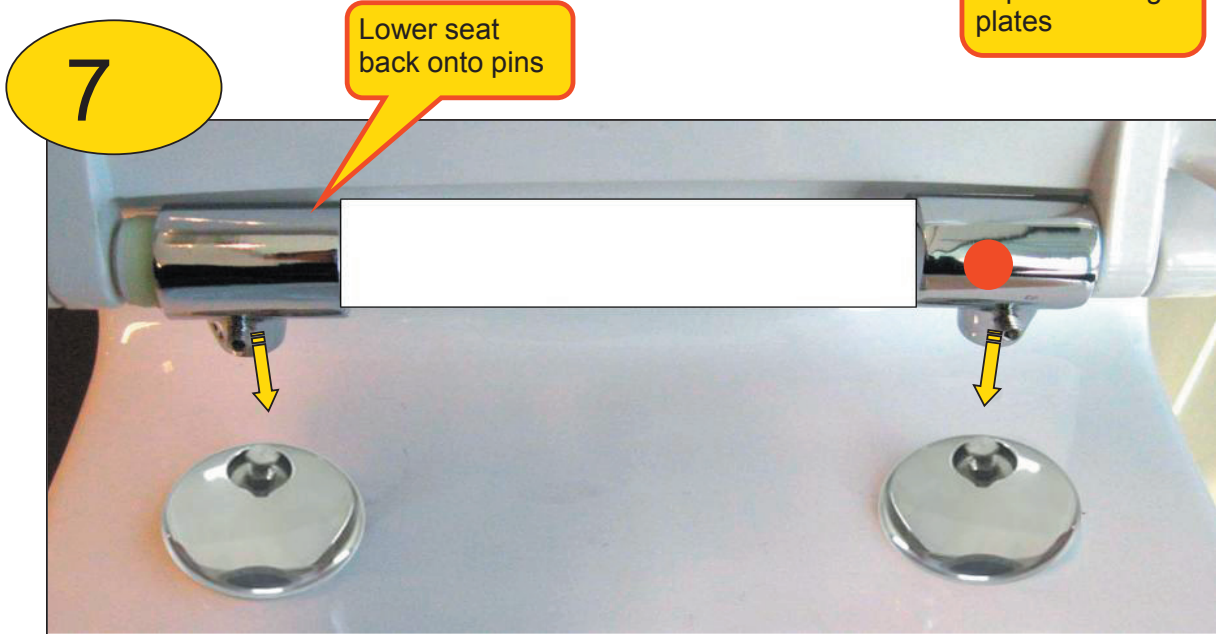
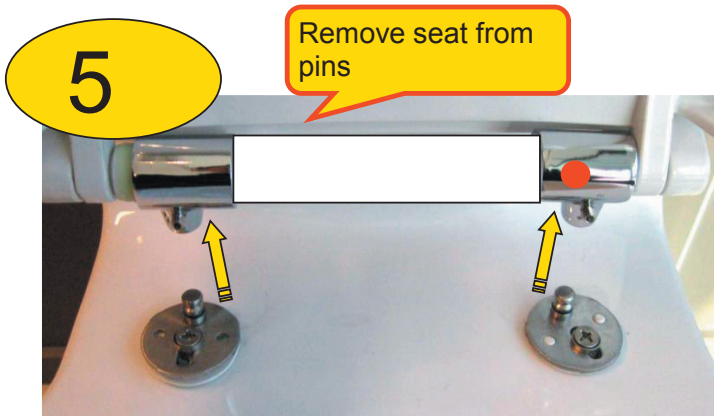
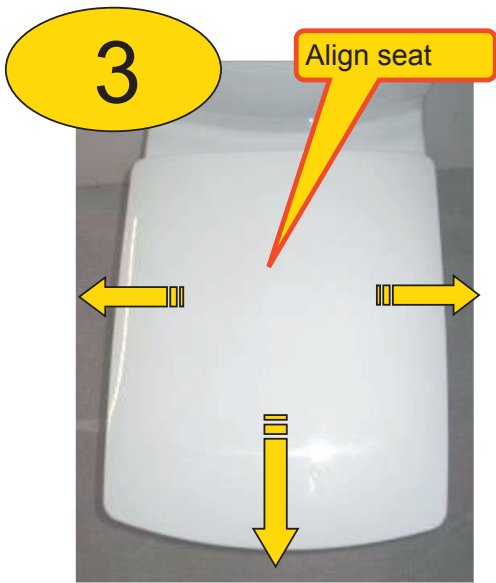


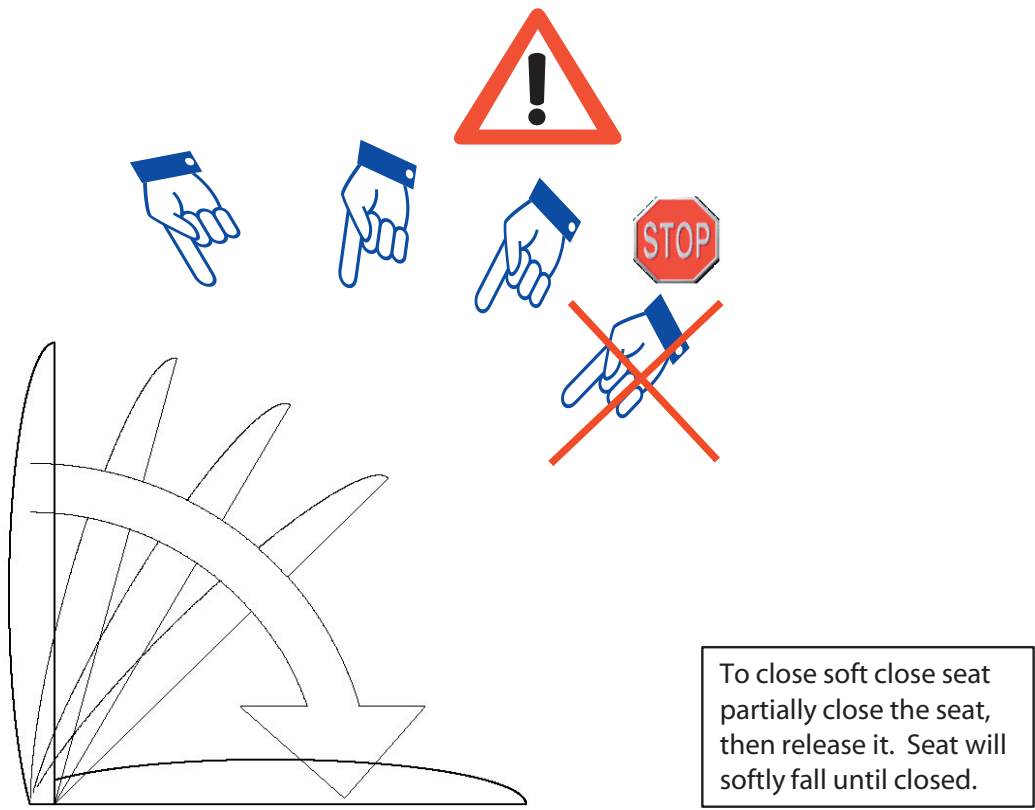
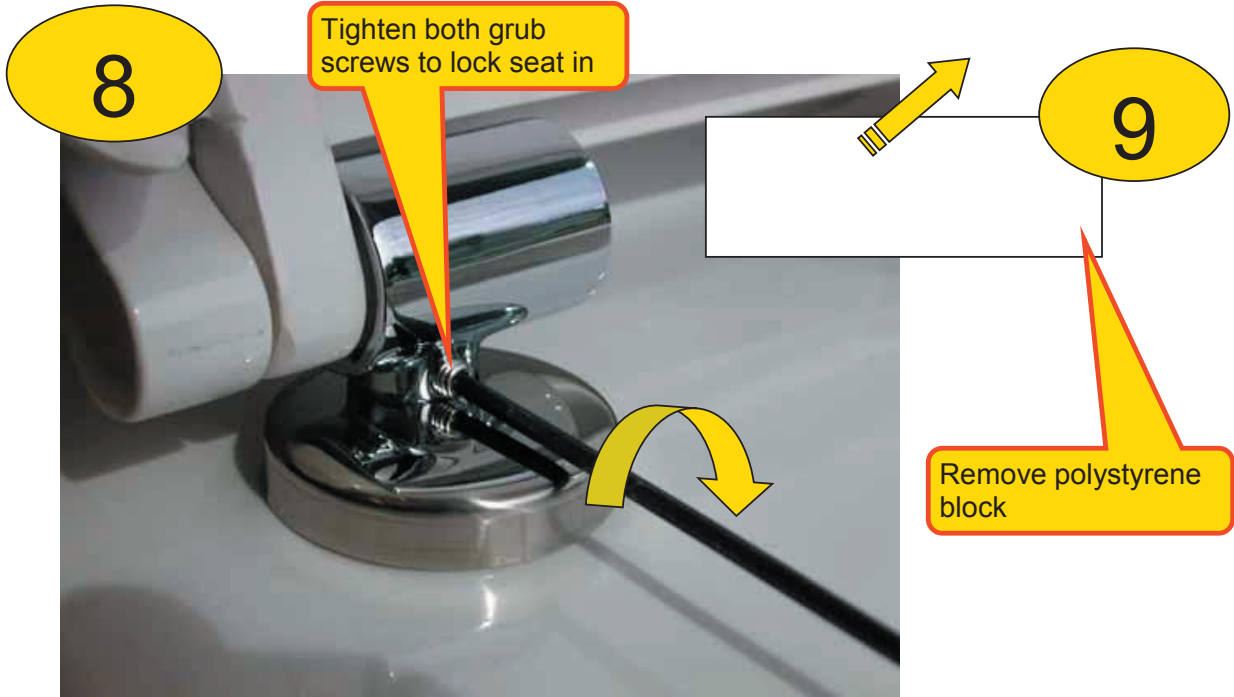
2

Lower hinges onto pins with grub screws fully loose.


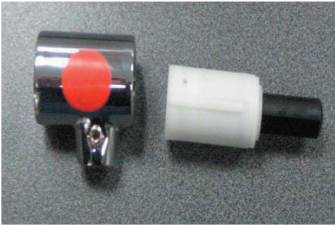





Right hand hinge marked with red dot







SPARE PARTS

| | | |
|--|--|--|
| <p>1112831 Damper green QC seat</p> <p>1112828 Hinge cover LHS QC seat</p> | |  |
| <p>1112832 Damper white QC seat</p> <p>1112829 Hing cover RHS QC seat</p> | |  |
| <p>1112830 Grub Screw</p> | |  |
| <p>1112827 Hinge kit metal</p> | |  |
| <p>1150399 Hinge kit metal -50mm</p> | |  |
| <p>1071559 Toggle</p> | |  |
| <p>1178215 Blind hole fixing kit</p> | |  |

| | | |
|---------|---|--|
| 1121368 | Bumper kit - Escale |  |
| 1121372 | Bumper kit Ove / Kohler |  |
| 1178213 | Bumper kit - Viragio Bumper kit - Reve |  |
| 1178214 | Bumper kit - Reach |  |
| 1121371 | Bumper kit Opiaz / Milano |  |
| 1121367 | Bumper kit Freelance |  |

For warranty information, please visit our website

Australia
www.au.kohler.com

New Zealand
www.kohler.co.nz

KOHLER
CALL US FOR HELP

NEW ZEALAND
 KOHLER NZ LTD

AUSTRALIA
 KOHLER CO.

Free Ph: 0800 564 537 (0800 KOHLER)
 Free Fax: 0800 664 488
www.kohler.co.nz

Free Ph: 1 300 362 284
 Free Fax: 1 300 652 284
www.au.kohler.com

PN: 1106852 V:6 1/06/2011

Page: 7 of 7