

THE BOLD LOOK OF KOHLER

INSTALLATION INSTRUCTIONS
QUIET-CLOSE QUICK RELEASE
TOILET SEAT

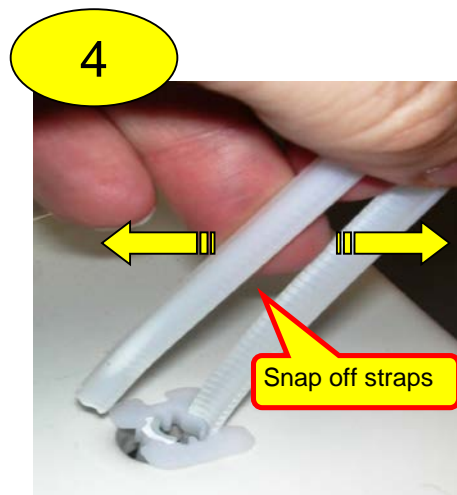
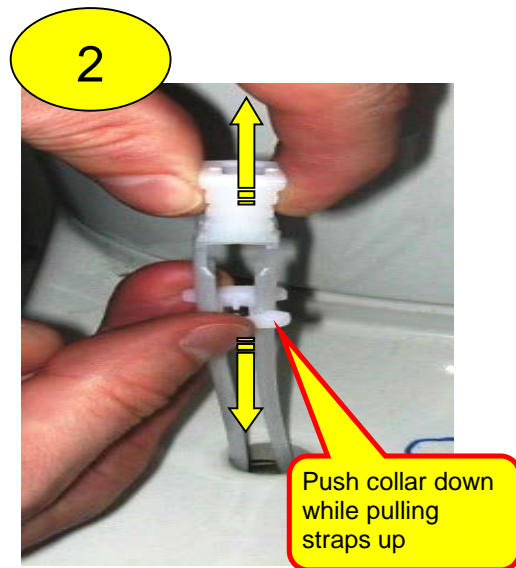
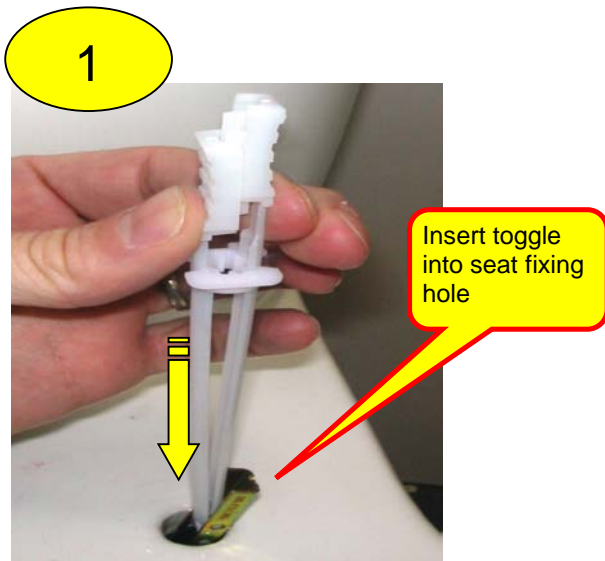
BEFORE YOU BEGIN

Thank you for choosing the Bold Look of Kohler. Kohler craftsmanship offers you a rare combination of proven performance and graceful sophistication that will satisfy you for years to come. The quality and dependability of your Kohler toilet seat will surpass your highest expectations. We're very proud of our products here at Kohler and we know you will be too.

Please take a few minutes to study this manual. Pay special attention to the Care and Cleaning instructions. All information in this manual is based upon the latest product information available at the time of publication. At Kohler we constantly strive to improve the quality of our products. We reserve the right to make changes in product characteristics, packaging or availability at any time without notice.

Care and Cleaning of Seats: Use warm soapy water only on toilet seats. Do not use abrasive cleaners or chemicals. This can damage the surface of the seat.

SEAT TO PAN INSTALLATION



5



6



Insert gasket to underside of hinge plate

7



Bolt hinge plate to plastic toggle collar but do not fully tighten - it should still be adjustable.

8

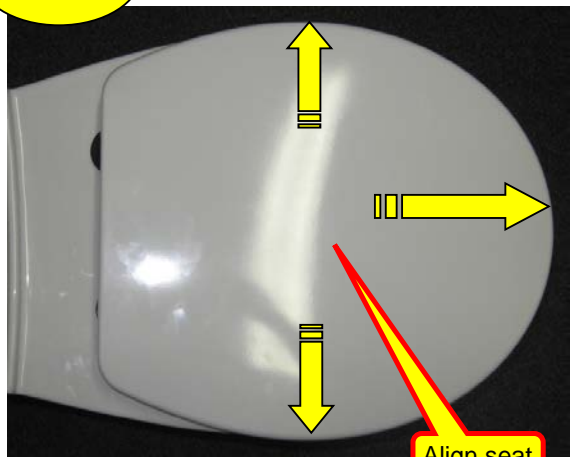


9



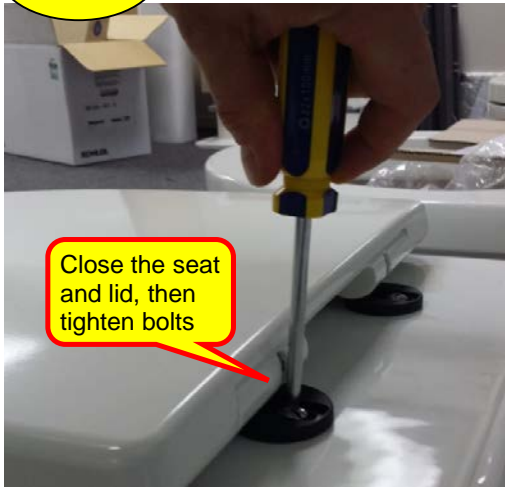
Locate seat hinge over pins and press down until seat "clicks" into place

10



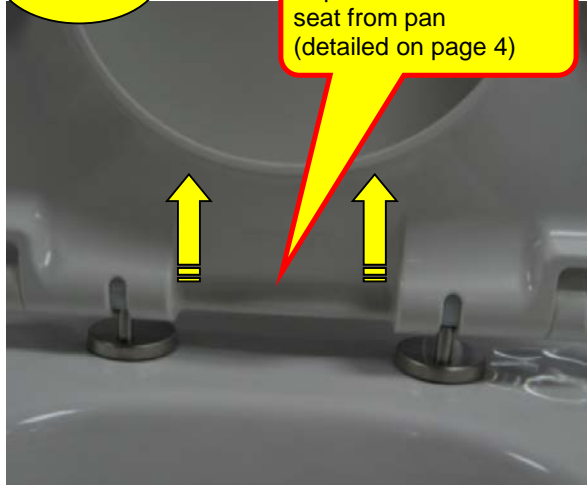
Align seat

11



Close the seat and lid, then tighten bolts

12



Separate and remove seat from pan (detailed on page 4)

13



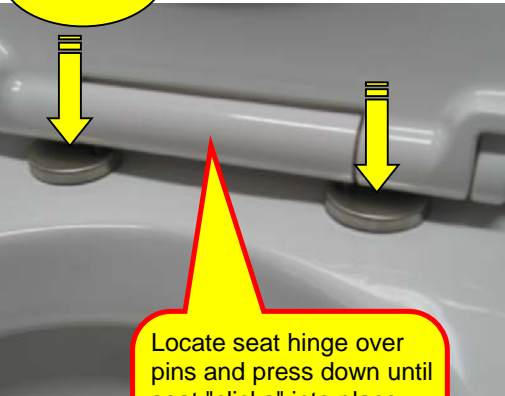
Ensure bolts are fully tightened

14



Place hinge plate caps onto hinge plates

15



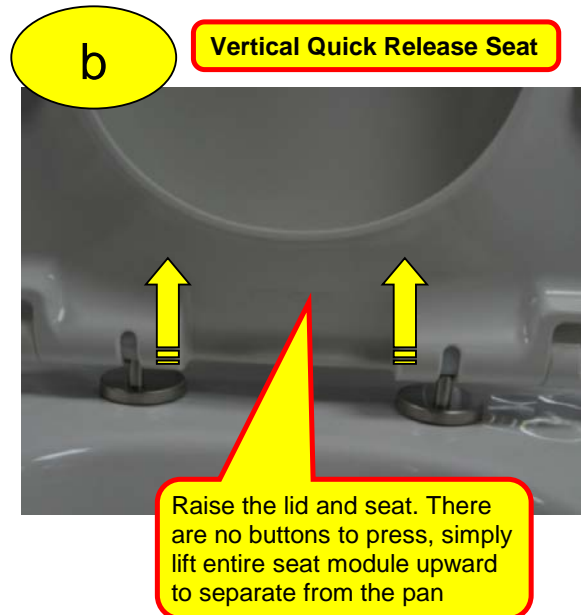
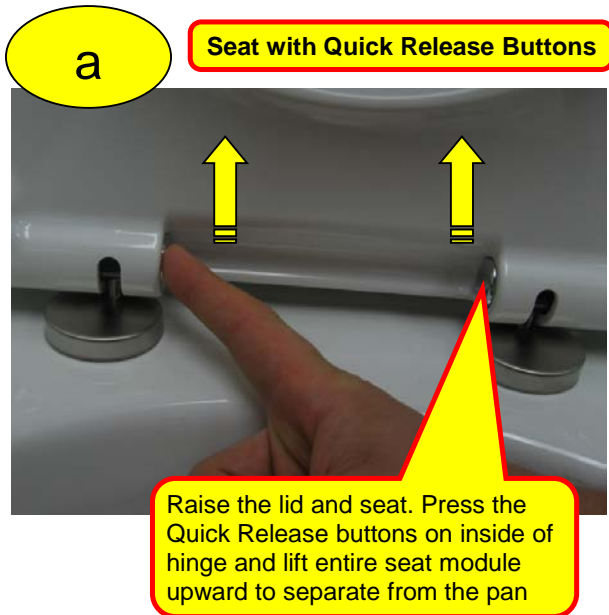
Locate seat hinge over pins and press down until seat "clicks" into place.
Repeat steps 10-14 if necessary

✓



Your Quick Release seat is now installed. To utilise the Quiet Close design, partially shut the seat and it will softly fall until closed.

QUICK RELEASE SEAT REMOVAL



To re-attach the seat unit:

Locate seat hinge over the hinge plate pins and press down until the seat "clicks" into place (step 15 on page 3)

CONTACT AND WARRANTY

PLEASE VISIT THE WEBSITE FOR WARRANTY INFORMATION

KOHLER

CALL US FOR HELP

NEW ZEALAND
KOHLER NZ LTD

Free Ph: 0800 564 537 (0800 KOHLER)
Free Fax: 0800 664 488
www.kohler.co.nz

AUSTRALIA
KOHLER CO.

Free Ph: 1 800 KOHLER
1 800 564537
www.kohler.com.au