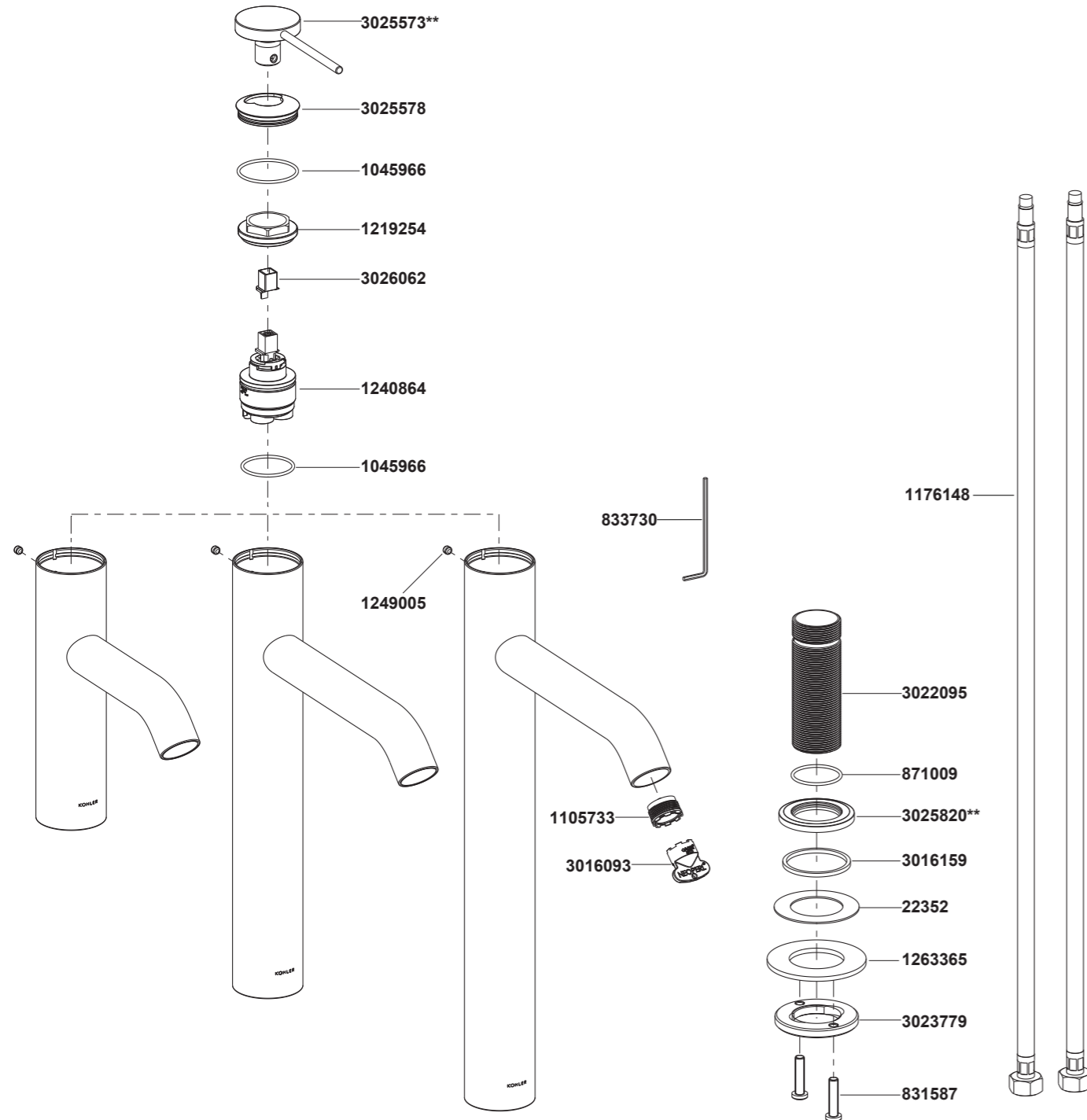


- 77958T-4AND Single Control Basin Mixer
- 77959T-4AND Tall Single Control Basin Mixer
- 77960T-4AND Super Tall Single Control Basin Mixer



**Color code must be specified when ordering.

- 77958T-4AND Single Control Basin Mixer
- 77959T-4AND Tall Single Control Basin Mixer
- 77960T-4AND Super Tall Single Control Basin Mixer

BEFORE YOU BEGIN

All information is based on the latest product information available at the time of publication. Kohler Co. reserves the right to make changes in product characteristics, packaging, or availability at any time without notice.

Please leave these instructions for the consumer. They contain important information.

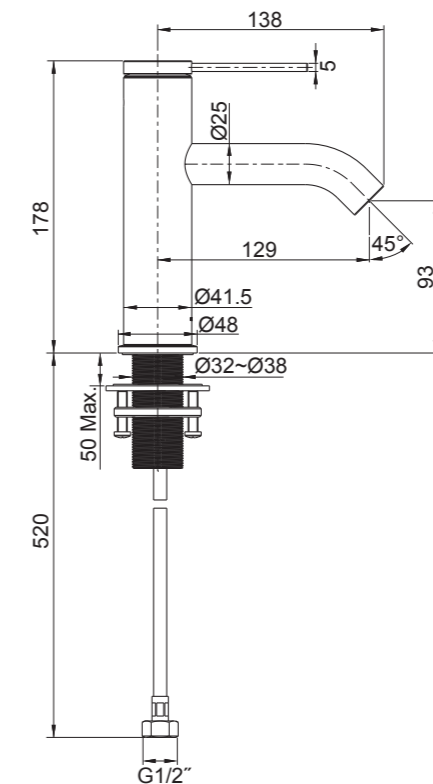
NOTES:

1. Flush the water supply pipes thoroughly to remove debris.
2. An inline water filter must be used with this product.
3. If possible, install this basin mixer before installing the basin.
4. Inspect the supply tubing for damage and leakage. Replace and maintain as necessary.
5. Observe local plumbing codes.
6. Shut off the water supplies to the fitting.
7. All installations should comply with the relevant requirements of AS/NZS 3500 and AS/NZS 6400.

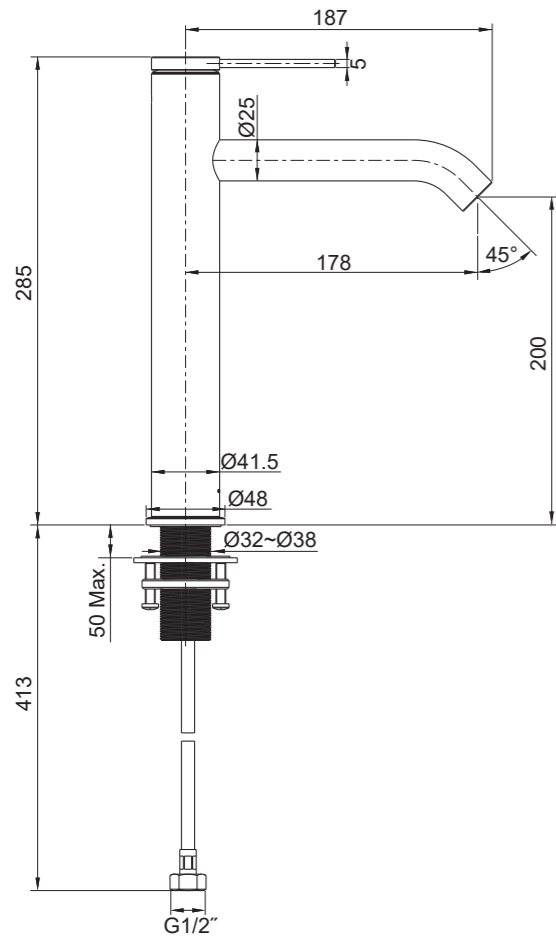
HANDLE OPERATION

Lift the handle gently. Turn clockwise for hot water, turn counter-clockwise for cold water.

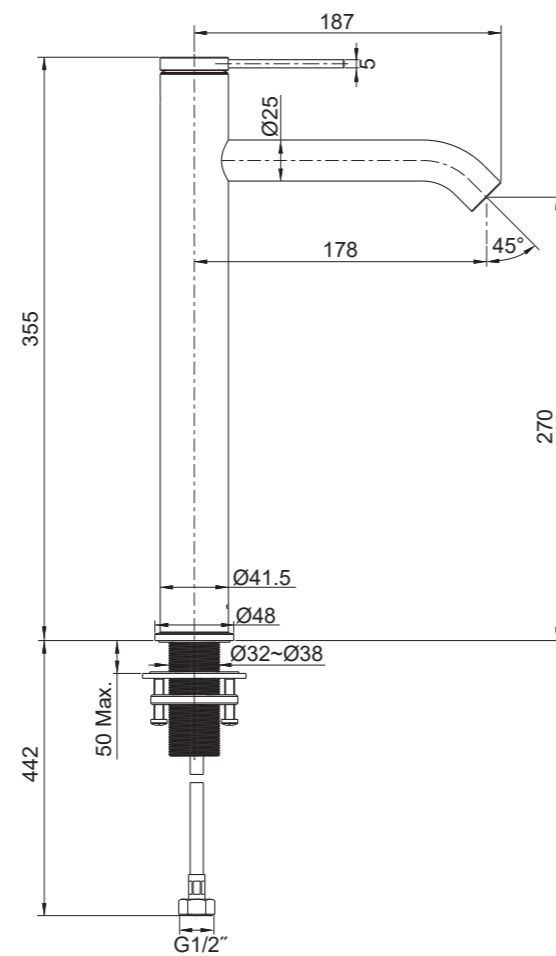
ROUGH-IN DIMENSIONS



77958T-4AND

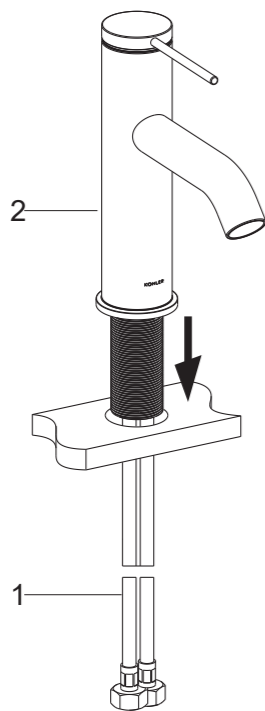


77959T-4AND



77960T-4AND

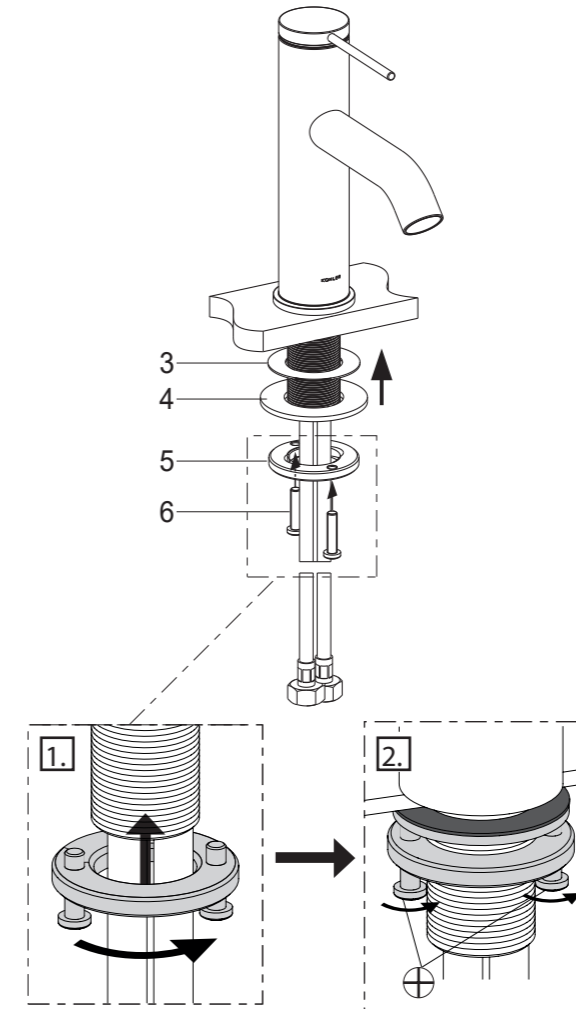
INSTALLATION



How to Install the Spout

If needed to take off the hoses(1) to repair, reinstall and tighten them by hand.

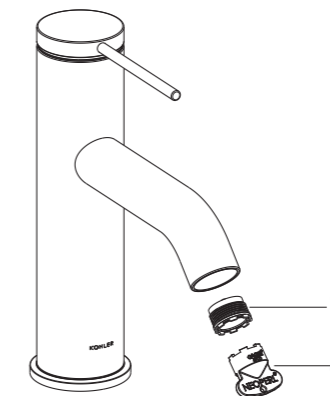
Insert the basin mixer assembly(2) into the basin hole.



Position the basin mixer, install the screws(6) into the mounting nut(5). From underside of the basin mixer, place the washers(3, 4) onto the shank. Tighten the mounting nut to secure the basin mixer. Tighten the screws.

Attach the hoses to water supplies. The hose with blue dot should be connected to cold water. The hose with red dot should be connected to hot water.

INSTALLATION CHECKOUT



Ensure that all connections are tight. Ensure that the handle is in the off position.

Turn on main water supply and check for leaks. Repair as required.

Remove aerator(7) by key(8). Turn on the handle of the basin mixer and run hot and cold water through spout for about one minute to remove any debris. Remove any debris from aerator. Shut off the basin mixer and reinstall aerator.

CLEANING INSTRUCTIONS

All Finishes: Clean the finish with mild soap and warm water. Wipe entire surface completely dry with clean soft cloth. Many cleaners may contain chemicals, such as ammonia, chlorine, toilet cleaner etc, which could adversely affect the finish and are not recommended for cleaning.

Do not use abrasive cleaners or solvents on Kohler faucets and fittings.