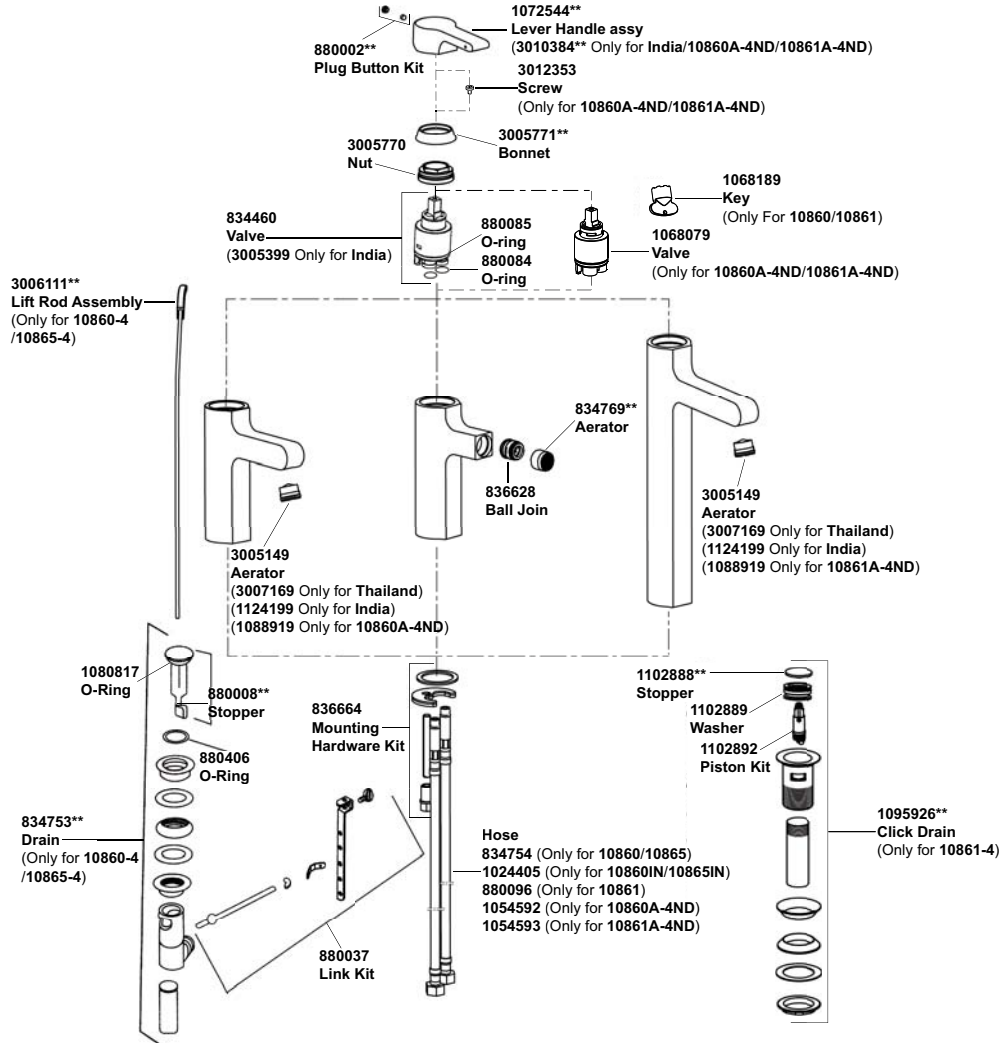


10860-4/10860-4ND SINGLE HOLE LAV FAUCET
10861-4/10861-4ND SINGLE HOLE TALL LAV FAUCET
10865-4 SINGLE HOLE BIDET FAUCET



**Color code must be specified when ordering

10860-4/10860-4ND SINGLE HOLE LAV FAUCET
10861-4/10861-4ND SINGLE HOLE TALL LAV FAUCET
10865-4 SINGLE HOLE BIDET FAUCET

BEFORE YOU BEGIN

All information is based on the latest product information available at the time of publication. Kohler Co. reserves the right to make changes in product characteristics, packaging, or availability at any time without notice.

Please leave these instructions for the consumer. They contain important information.

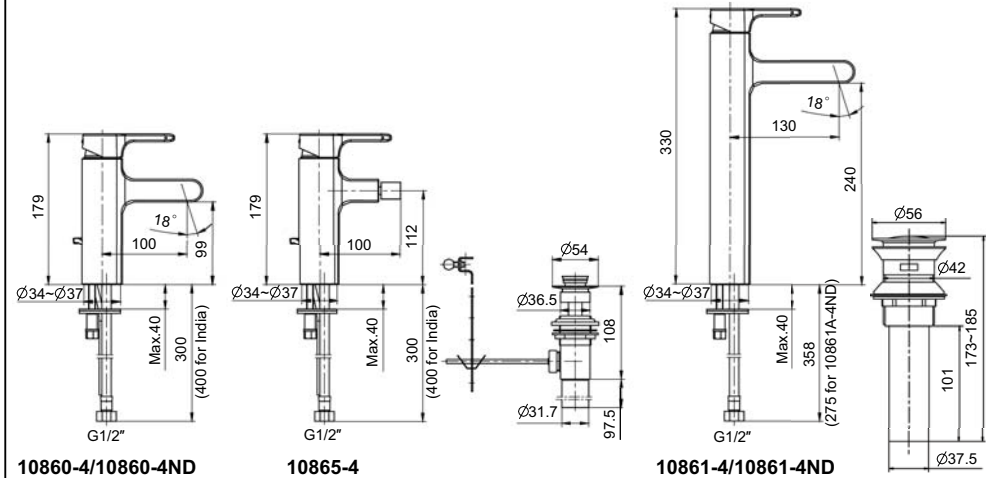
NOTES:

1. Flush the water supply pipes thoroughly to remove any debris.
2. An in line water filter must be used with this product.
3. For new installations, assemble faucet and drain to lavatory before installing lavatory.
4. Recommended working pressure: 1 to 5 bars.
5. Maximum working pressure: 8 bars.

HANDLE OPERATION

Lift the handle gently. Turn left for hot water, right for cold water.

ROUGH-IN DIMENSIONS



*No drain for "ND" version

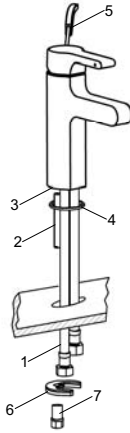
INSTALLATION

How To Install The Faucet

Install the mounting stud(2) into the faucet body base(3). Insert lift rod(5) into the hole at the rear of the body assembly (only for 10860-4, 10865-4). Slide washer(4) into the groove on the body assembly. Insert the flexible supply hoses(1) into the lavatory or bidet hole.

From underside of lavatory or bidet, place bracket(6) and nut(7) onto mounting stud(2). Position the faucet so that spout points to the front. Tighten nut to secure faucet to lavatory or the bidet.

Attach the hoses to water supplies. When facing front of the faucet, the left hose is for hot water, the right hose is for cold water.



How To Install The Drain For 10860-4 And 10865-4 Only

Remove flange(8) from drain body(11). Slide the washer(9) onto the underside of the drain flange. Apply thread tape to tailpiece(10). Install to drain body. Insert drain body into underside of lavatory or bidet with drain lever hole(12) facing to the back of it. Thread the flange onto the drain body until hand tight. Tighten the locknut(13) by hand from the underside of the fixture.

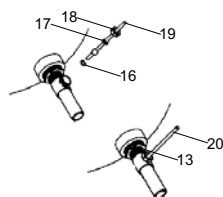
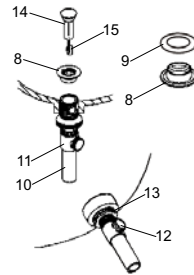
Place the stopper(14) into drain body aligning the flat side of stopper hole(15) with the drain lever hole.

NOTE: If needed apply a ring of plumbers putty around the underside of the drain flange(8), instead of using the washer(9).

Place the plastic washer(16) into the drain lever hole. Put another plastic washer(17) and retaining nut(18) into the long end of ball lever rod(19). Insert the ball lever assembly(20) into the drain lever hole and through the stopper hole(15), and tighten the retaining nut.

Be sure that the ball lever points to the back of the lavatory or the bidet. Tighten the locknut(13) onto the drain body. Remove any excess putty.

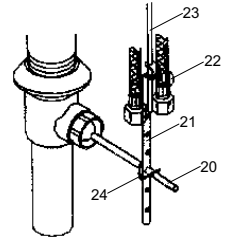
NOTE: Do not reposition the drain after the locknut is tightened, or you may break the putty seal.



Assemble thumb screw(22) to link(21), and link onto ball lever rod(20) with "V"-clip(24). Slide the rod(23) through hole in faucet and into the hole in link. Position the lift rod so bottom of the lift rod knob rests against the faucet body.

Push the ball lever down into the open position.

Tighten the thumb screw.

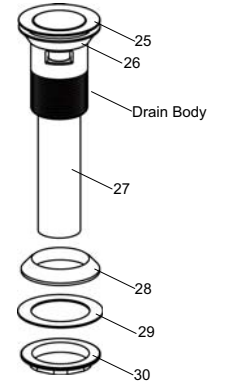


For 10861-4 Only

Remove the locknut(30), plastic washer(29), rubber gasket(28) and tailpiece(27) from the drain body. Supply enough tape or sealant to tailpiece thread. Reinstall the tailpiece. Insert the drain body into the lavatory. Put the rubber gasket (Tapered side up), plastic washer and locknut back to the drain body in turn. Tighten the locknut.

NOTE: If needed, apply a ring of plumbers putty or other sealants around the underside of the drain flange(25), instead of using rubber washer(26).

Do not reposition the drain after the locknut is tightened, or you may break the putty or sealant seal.

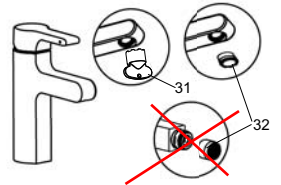


INSTALLATION CHECKOUT

Ensure that all connections are tightened and the handle is in the off position.

Open the drain. Turn on the main water supply and check for leaks. Repair as required.

Remove the aerator assembly(32) (for **10860** and **10861**, with the key(31) provided). Turn the faucet handle on. Run hot and cold water through the spout for about one minute to remove any debris. Remove debris from the aerator. Shut off the faucet and reinstall the aerator.



CLEANING INSTRUCTIONS

All Finishes: Clean the finish with mild soap and warm water. Wipe entire surface completely dry with a clean soft cloth. Many cleaners may contain chemicals, such as ammonia, chlorine, toilet cleaner etc. which could adversely affect the finish and are not recommended for cleaning.

Do not use abrasive cleaners or solvents on Kohler faucets and fittings.