

Bottle Trap: 98461A

BEFORE YOU BEGIN

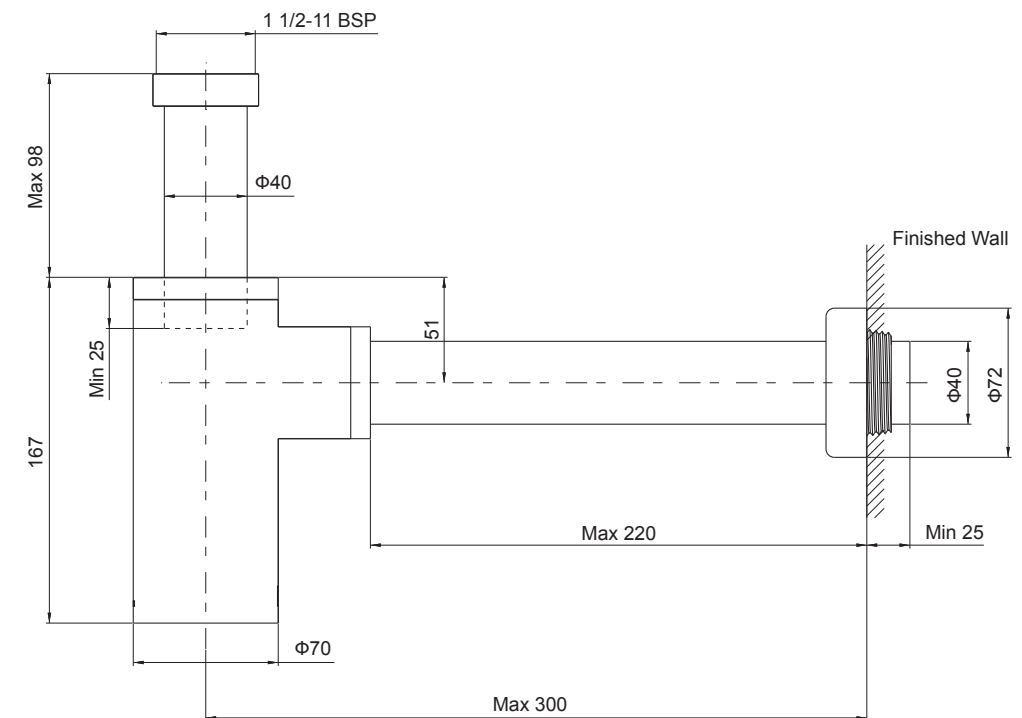
All information is based on the latest product information available at the time of publication. Kohler Co. reserves the right to make changes in product characteristics, packaging, or availability at any time without notice.

Please leave these instructions for the consumer. They contain important information.

NOTES:

1. Observe all local plumbing codes.
2. Shut off the main water supply.
3. According to rough-in dimensions, drain stub-out should be prearranged in the wall. Inside diameter of the drain stub-out must be little bigger than 32mm (recommended 33~36mm). It can extend beyond the wall, but no more than 10mm. The pipe of the bottle trap can reach into drain stub-out no less than 50mm.
4. Recommended working pressure: 1 to 5 bars.
5. Maximum working pressure: 8 bars.
6. All installations should comply with the relevant requirements of AS/NZS 3500.

ROUGH-IN DIMENSIONS



INSTALLATION

Install the drain to the basin according to the manufacturer installation instructions.

Install the tailpiece(9) to the drain using tailpiece nut(10) and washer(11).

Remove the inlet nut(8) and o-ring(7) from the bottle trap body(6).

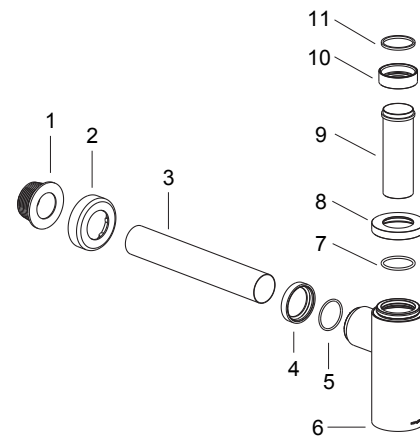
With the threads facing down, slide the inlet nut with o-ring onto the tailpiece. Slide the bottle trap body onto the tailpiece and keep the outlet of bottle trap facing and aligning with the drain stub-out(1). Then hand tighten the inlet nut.

Remove the outlet nut(4) and o-ring(5) from the bottle trap. The length of the pipe(3) should be about 50mm longer than the distance from drain stub-out(1) to the outlet. If more, cut it off as needed. Be careful, not to damage the finish.

Slide the outlet nut and o-ring to one end of pipe, and flange(2) to the other end. Insert the pipe to the bottle trap outlet and drain stub-out. If you can't do so, adjust the position of bottle trap. Tighten the inlet nut(8) and outlet nut(4) to secure the bottle trap.

Fill up the gap between drain stub-out and pipe with plumber putty or sealants. Remove any excess putty or sealant. Push flange against the finished wall.

NOTE: Ensure the pipe is inserted at least 25mm inside both the outlet of the bottle trap and drain stub-out.



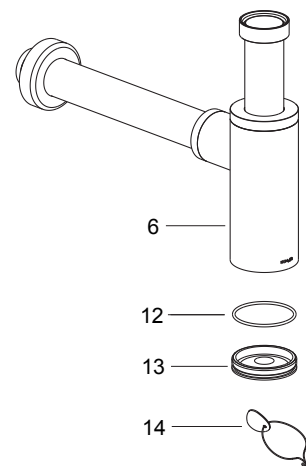
INSTALLATION CHECKOUT

Ensure all coupling nuts are tightened.

Turn on the main water supply. Check for leaks. Repair as required.

Clean Debris in Bottle Trap.

Using the key(14), turn the trap plug(13) counterclockwise until fully removed from the bottle trap body. Set the trap plug with o-ring (12) aside. Clean out any debris that has collected in the bottle trap body(6). Reinstall the trap plug with the o-ring to the bottle trap body.



CLEANING INSTRUCTIONS

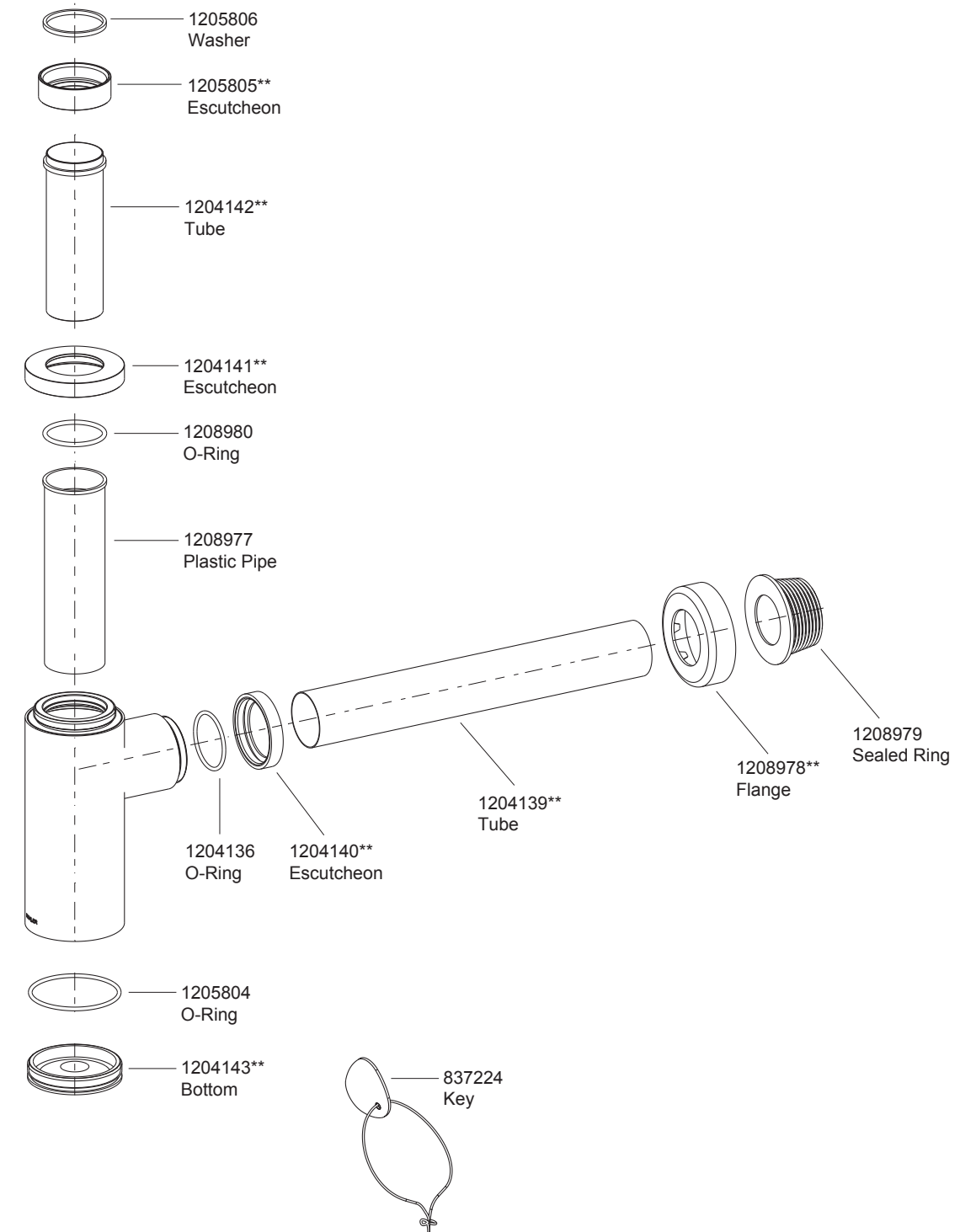
All Finishes: Clean the finish with mild soap and warm water. Wipe entire surface completely dry with a clean soft cloth. Many cleaners may contain such chemicals as ammonia, chlorine, toilet chemicals etc. which could adversely affect the finish and are not recommended for cleaning.

Do not use abrasive cleaners or solvents on Kohler fittings.

KOHLER®
SPARE PARTS

BASIN ACCESSORIES
BOTTLE TRAP
Wall Mount Bottle Trap

Bottle Trap: 98461A



**Color code must be specified when ordering