

**Product**

- Conical bell vessels basin with empress bouquet design

**Kohler Code**

14223-SMC-0



**Included Components**

- Bench top cutting template

**Features**

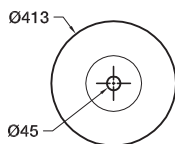
- Bench top installation
- Vitreous china

**Optional Accessories**

- Tapware
- Generic basin accessories

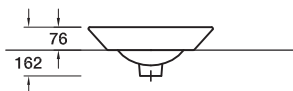
**Technical Details**

Top View

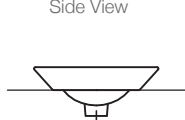


Weight: 7kg Approx  
Vol: 3.3L

Front View



Side View



**Installation Notes:**

- Allow a minimum of 50mm from the wall for easy cleaning.
- A hole for the basin needs to be made in the bench top (please refer to cutting template).
- The basin is fixed to the bench top using the appropriate silicone sealant (not supplied).