

**Product**

- Rêve vessels basin

**Kohler Code**

4819T-0



Waste not included

**Included Components**

- Bench top cutting template
- Chrome overflow cover

**Features**

- Bench top installation
- Overflow outlet
- Vitreous china

**Optional Accessories**

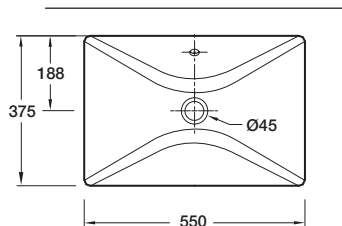
- Tapware (page 6.0.1)
- Generic basin accessories (section 1.8)

**Related Products**

- Rêve basins (page 1.0.1)
- Rêve toilets (page 2.0.1)

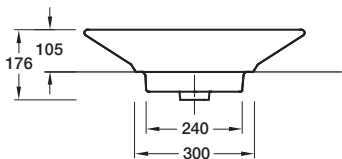
**Technical Details**

Top View

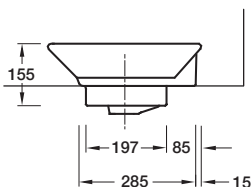


Weight: 10.65kg Appr

Front View



Side View



**Installation Notes:**

- Allow a minimum of 50mm from the wall for easy cleaning.
- A hole for the basin needs to be made in the bench top (please refer to cutting template).
- The basin is fixed to the bench top using the appropriate silicone sealant (not supplied).